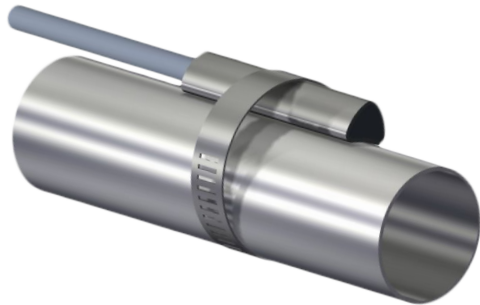




# Pipe surface temperature sensor ET243



## Features

- Operating range -40...80 °C or -30...105 °C
- Pt1000, Pt500, Pt100, PTC or NTC sensor
- Suitable for pipes Ø16...215 mm
- PVC insulation

## Specifications

Sensing element options	Pt1000A (standard) Pt500, Pt100, PTC1000, NTC10 etc
Measurement ranges (continuous / peak)	-40...+70 / 80 °C (with LiYY cable) -30...+70 / 105 °C (with LiYwYw cable)
Cable options	2 x 0,22 mm <sup>2</sup> LiYwYw, outer Ø 3,3 2 x 0,25 mm <sup>2</sup> LiYY, outer Ø 3,7
Cable length	3 m, other options on demand
Cable insulation	PVC
Body	A4 stainless steel
Encapsulation	Polyamide (nylon)
Protection class	IP67
Mounting options	Fixing with nylon cable ties Fixing with hose clamps

